

2002 Environmental Report

Contents: Preface	Page 2
Environmental policy	Page 3
Environmental organisation	Page 4
Environmental aspects	Page 5
Key environmental figures	Page 6
Comments on 2002	Page 7

Preface



Ladies and gentlemen,

By publishing our Environmental Report, we are marking a new milestone in the history of our company. We were pioneers of environmental management in our sector. This fact, together with the continual improvements we have implemented, underlines our sustained approach to these activities.

Our environmental policy offers us outstanding chances to shoulder our responsibilities for quality, as well as for adding and preserving value. Our products are of the highest quality, and they guarantee long service lifetimes. This also means that we are in harmony with the objectives of environmental protection.

The Board of Directors, the Management and all the employees of our company are committed to the requirements of standard ISO 14001. We are convinced that these obligations and this philosophy, with all the actions that result from them, will ultimately have positive effects on our business as well.

Our strategy is aimed at long-term success – a strategy which is equally decisive when it comes to environmental protection. Our environmental policy will enable us to continue to improve our environmental performance.

This commitment is not merely a phrase in our strategy documents - on the contrary, we are putting it into practice every single day of our lives.

Environmental policy

Our business conduct is typified by the way we carry out our ecological, economic and social responsibilities.

As an innovative manufacturer of highly complex printed circuit boards, we cooperate with our customers and suppliers to promote the use of environmentally compatible materials.

Our product manufacture is in harmony with the environment and it is supported by the following aspects of process and plant technology:

- emissions and the associated immissions are minimised
- energy is used economically, and the process energy that is generated is put to further use
- recyclable components are used
- internal and monitored external disposal is as environment-neutral as possible

We also endeavour to use packaging that protects the environment and to make sure that transport meets ecological requirements.

We measure and control all our environmentally relevant activities and objectives with our Environmental Management System to ISO 14001, enabling us to improve our environmental performance on a continuous basis.

The effects of our ongoing activities on the environment are documented and assessed in a Report. The completed evaluation is used to define objectives and initiate actions.

We foster our employees' ecological responsibility by providing suitable basic and advanced training for them. We undertake to obey the environmental laws and regulations, and also to play an active part in spreading environmental awareness.

We provide open and transparent information about issues concerning safety and environmental protection.

Organisation

Environment Officer

G. Dognini

Environment Coordinator

M. Jenal

- Manager, Technical Engineering
- Environmental Management

Environment Committee

R. Schönenberger

- Product Technology
- Chemistry and waste Recycling
- “Poison” Responsibility
- Occupational Safety
- Process Safety
- -Techn.Engineering/Environment

Th. Widmer
M. Jenal
G. Bischofberger
M. Jenal
a.i. M. Jenal
M. Jenal

Environmental Goals

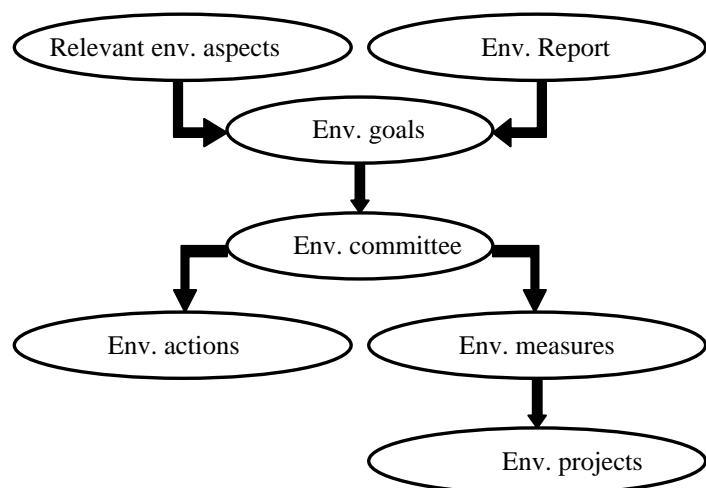
The basis for the goal-setting process is the Environmental Report with defined evaluation factors for the completed period, and a continuous assessment of the relevant environmental aspects. Based on these criteria and results, the management specifies environmental goals for the new period, and adopts an Environmental Programme containing environmental actions and measures aimed at achieving the goals.

Environmental actions

Short-and-medium term activities

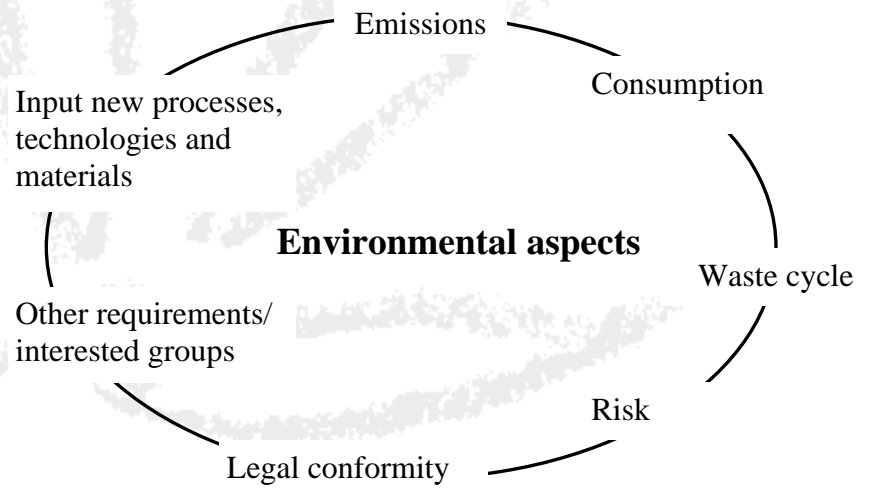
Environmental measures

Long-term measures

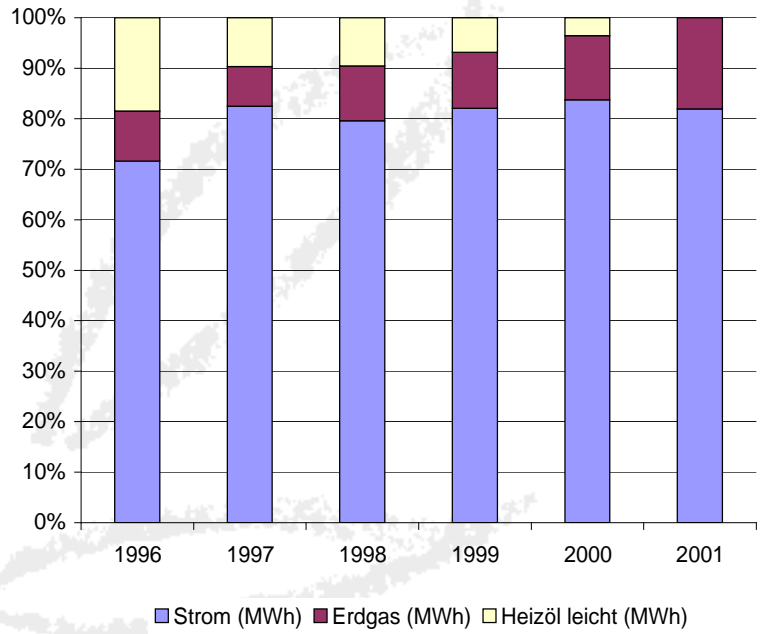


Environmental aspects

The environmental aspects are used to identify a need for action. We assess all environment-relevant processes and plant according to the following important environmental criteria:

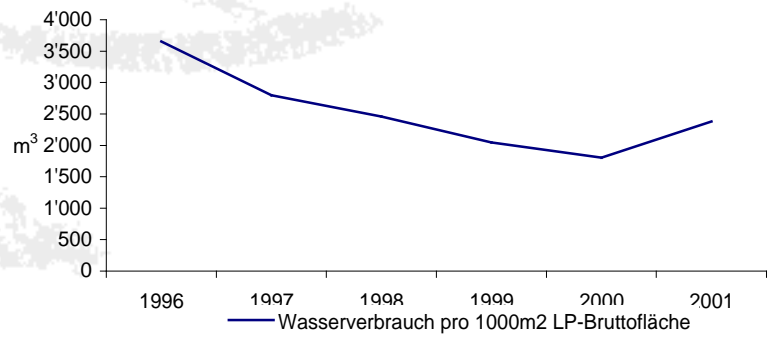


Key environment figures Energy



Power (MWh) - Natural Gas (MWh) - Heating oil, light (MWh)

Water



Water consumption per 1000m2 gross pcb area

Comments on 2002

In 2002, the ongoing telecommunications crisis resulted in low utilisation of production capacity, calling for intensive restructuring measures.

Nevertheless, we were able to implement some important innovations in the environmental sector.

Direct and positive consequences resulted from our environment-minded achievements such as optimising the new disposal system, the new alkaline etching machine and the central chemical supply to line 2000 with NAPS.

Our re-certification to ISO 14001 - with no substantial weaknesses identified - may be described as a great success.